



Requested photo documentation to warranty claims

Ekom spol. s r.o. would like to ask our customers and partners to make following photo documentation in order to receive as much relevant information as possible to ease and speed up claim solving process. Thank you for understanding.

Please note that below listed picture of compressor is used for demonstration purposes. These steps have to be taken in regards to all types of Ekom compressors.

Except requested below photo documentation please make a picture of damaged/failed component.

Please make pictures of following parts of compressor:



1. Take a picture of general look of a compressor



2. Take a picture of back side of compressor:

2a. Take a picture of inlet filter



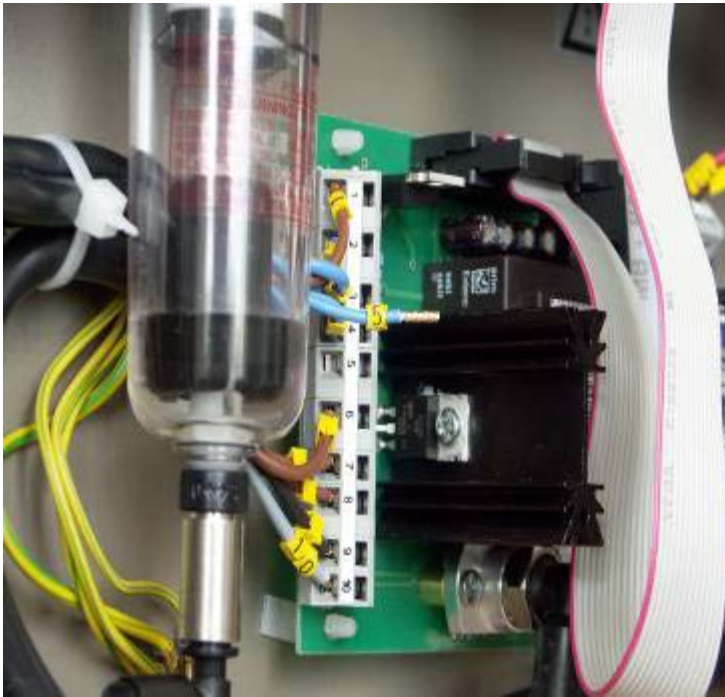
2b. – Take a picture of serial number of compressor



3. Take a picture of back side of compressor without cover



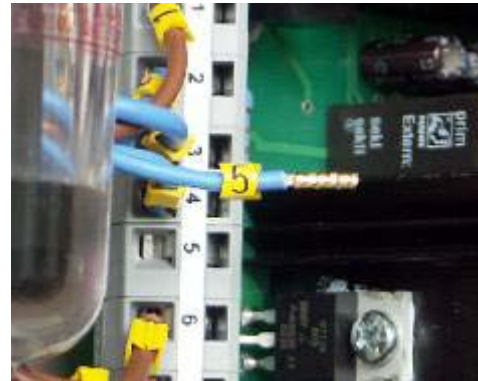
4. Take a picture of filters detail



6. Take a picture of working hours. In order to so please follow below listed steps:

6a.

- turn off the compressor
- disconnect phase of motor (wire number 5)



6b.

- turn on the compressor
- push button TIME (make a picture of hours shown on display)
- turn off the compressor
- connect phase of motor (wire number 5)

the





7. Take a picture of aggregate
and air-tank



8. Take a picture of crank area after the cover is
removed

THANK YOU ☺