



FOR DIRECT CURRENT (DC) FÜR GLEICHSTROM/ POUR UN COURANT CONTINUE (CC)

DJ

- one cylinder
- 1-Zylinder Version
- un cylindre

DJX

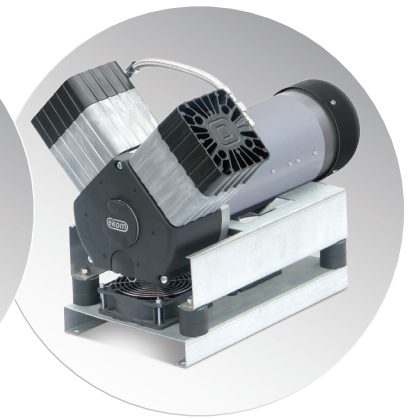
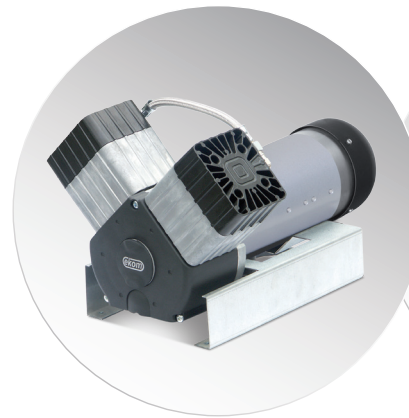
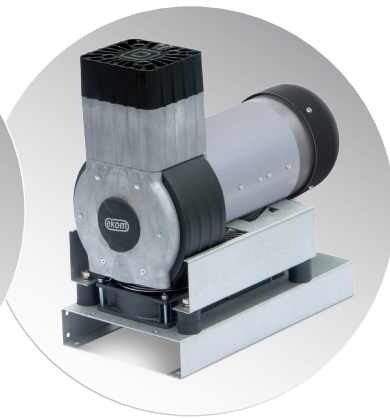
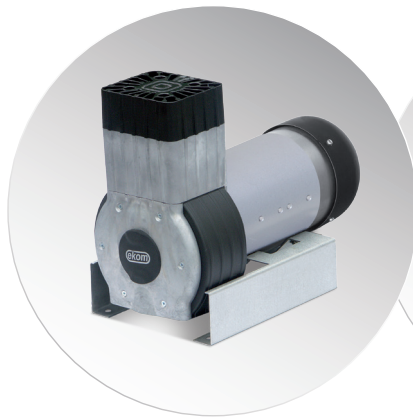
- one cylinder with additional cooling
- 1-Zylinder Version mit zusätzlicher Kühlung
- un cylindre utilisant un refroidissement supplémentaire

DV

- two cylinders
- 2-Zylinder Version
- deux cylindres

DVX

- two cylinders with additional cooling
- 2-Zylinder Version mit zusätzlicher Kühlung
- deux cylindres utilisant un refroidissement supplémentaire



	DJ30-12	DJ30-36	DJ40-24	DJ40-36	DJ40-72	DJ40-110	DJ60-24	DJ60-36	DJ60-72	DJ60-110	DV120-110
	35 l.min ⁻¹ / 6 bar	35 l.min ⁻¹ / 6 bar	40 l.min ⁻¹ / 6 bar	40 l.min ⁻¹ / 6 bar	40 l.min ⁻¹ / 6 bar	40 l.min ⁻¹ / 6 bar	60 l.min ⁻¹ / 7 bar	60 l.min ⁻¹ / 7 bar	60 l.min ⁻¹ / 7 bar	60 l.min ⁻¹ / 7 bar	110 l.min ⁻¹ / 7 bar
	8 bar	8 bar	8 bar	8 bar	8 bar	8 bar	8 bar	8 bar	8 bar	8 bar	8 bar
S1-S3	S3 - 30%	S3 - 30%	S3 - 30%	S3 - 30%	S3 - 30%	S3 - 30%	S3 - 30%	S3 - 30%	S3 - 30%	S3 - 30%	S3 - 30%
	≤ 64 dB(A)	≤ 64 dB(A)	≤ 64 dB(A)	≤ 64 dB(A)	≤ 64 dB(A)	≤ 64 dB(A)	≤ 64 dB(A)	≤ 64 dB(A)	≤ 64 dB(A)	≤ 70 dB(A)	≤ 73 dB(A)

	DJX30-12	DJX30-36	DJX40-24	DJX40-36	DJX40-72	DJX40-110	DJX60-24	DJX60-36	DJX60-110	DVX120-110
	35 l.min ⁻¹ / 6 bar	35 l.min ⁻¹ / 6 bar	40 l.min ⁻¹ / 6 bar	40 l.min ⁻¹ / 6 bar	40 l.min ⁻¹ / 6 bar	40 l.min ⁻¹ / 6 bar	60 l.min ⁻¹ / 7 bar	60 l.min ⁻¹ / 7 bar	60 l.min ⁻¹ / 7 bar	110 l.min ⁻¹ / 7 bar
	8 bar	8 bar	8 bar	8 bar	8 bar	8 bar	8 bar	8 bar	8 bar	8 bar
S1-S3	S1 - 100%	S1 - 100%	S1 - 100%	S1 - 100%	S1 - 100%	S1 - 100%	S1 - 100%	S1 - 100%	S1 - 100%	S1 - 100%
	≤ 64 dB(A)	≤ 64 dB(A)	≤ 64 dB(A)	≤ 64 dB(A)	≤ 64 dB(A)	≤ 64 dB(A)	≤ 64 dB(A)	≤ 64 dB(A)	≤ 64 dB(A)	≤ 73 dB(A)