



## FOR DIRECT CURRENT (DC) FÜR GLEICHSTROM/ POUR UN COURANT CONTINUE (CC)

### DJ

- one cylinder
- 1-Zylinder Version
- un cylindre

### DJX

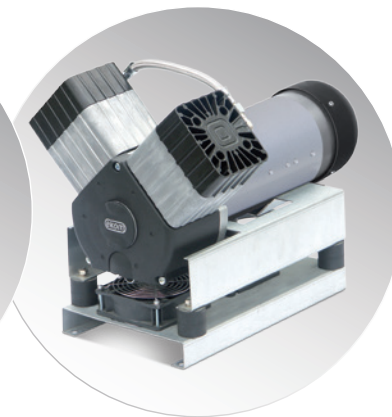
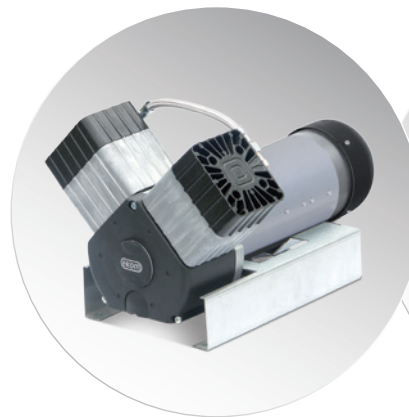
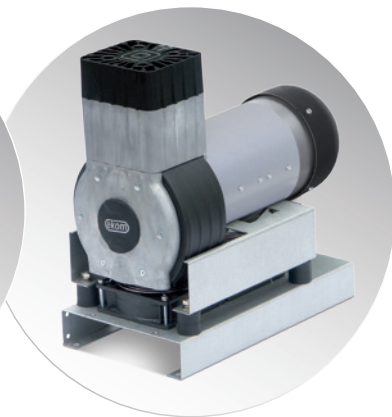
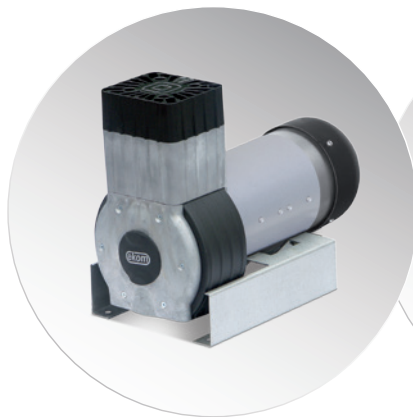
- one cylinder with additional cooling
- 1-Zylinder Version mit zusätzlicher Kühlung
- un cylindre utilisant un refroidissement supplémentaire

### DV

- two cylinders
- 2-Zylinder Version
- deux cylindres

### DVX

- two cylinders with additional cooling
- 2-Zylinder Version mit zusätzlicher Kühlung
- deux cylindres utilisant un refroidissement supplémentaire



	DJ30-12	DJ40-24	DJ60-24	DJ40-36	DJ60-36	DJ40-72	DJ60-72	DJ60-110	DV120-110	DV120-24
	30 l.min <sup>-1</sup> / 5 bar	40 l.min <sup>-1</sup> / 6 bar	60 l.min <sup>-1</sup> / 7 bar	40 l.min <sup>-1</sup> / 6 bar	60 l.min <sup>-1</sup> / 7 bar	40 l.min <sup>-1</sup> / 6 bar	60 l.min <sup>-1</sup> / 7 bar	60 l.min <sup>-1</sup> / 7 bar	115 l.min <sup>-1</sup> / 5 bar	115 l.min <sup>-1</sup> / 5 bar
	8 bar	8 bar	8 bar	8 bar	8 bar	8 bar	8 bar	8 bar	8 bar	8 bar
S1-S3	S3 - 30%	S3 - 30%	S3 - 30%	S3 - 30%	S3 - 30%	S3 - 30%	S3 - 30%	S3 - 30%	S3 - 30%	S3 - 30%
	≤ 64 dB(A)	≤ 64 dB(A)	≤ 64 dB(A)	≤ 64 dB(A)	≤ 64 dB(A)	≤ 64 dB(A)	≤ 64 dB(A)	≤ 70 dB(A)	≤ 73 dB(A)	≤ 73 dB(A)

	DJX30-12	DJX40-24	DJX60-24	DJX40-36	DJX60-36	DJX40-72	DJX60-72	DJX60-110	DVX120-110	DVX120-24
	30 l.min <sup>-1</sup> / 5 bar	40 l.min <sup>-1</sup> / 6 bar	60 l.min <sup>-1</sup> / 7 bar	40 l.min <sup>-1</sup> / 6 bar	60 l.min <sup>-1</sup> / 7 bar	40 l.min <sup>-1</sup> / 6 bar	60 l.min <sup>-1</sup> / 7 bar	60 l.min <sup>-1</sup> / 7 bar	115 l.min <sup>-1</sup> / 5 bar	115 l.min <sup>-1</sup> / 5 bar
	8 bar	8 bar	8 bar	8 bar	8 bar	8 bar	8 bar	8 bar	8 bar	8 bar
S1-S3	S1 - 100%	S1 - 100%	S1 - 100%	S1 - 100%	S1 - 100%	S1 - 100%	S1 - 100%	S1 - 100%	S1 - 100%	S3 - 50%
	≤ 64 dB(A)	≤ 64 dB(A)	≤ 64 dB(A)	≤ 64 dB(A)	≤ 64 dB(A)	≤ 64 dB(A)	≤ 64 dB(A)	≤ 70 dB(A)	≤ 73 dB(A)	≤ 73 dB(A)